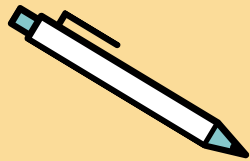


HOW TO:

submit your piece to



bar•tle•by

Email submissions to bartleby@umbc.edu. The deadline is December 1st.

Make sure written submissions are a Microsoft Word Document attachment and art submissions are in JPG, GIF, PNG, or TIFF format.

Include your name *only* within your email (not your submission) so that our review of your submission may be unbiased.

Visit bartleby.umbc.edu/submissions/ for an exhaustive list of rules and regulations.



umbc.bartleby

[umbc_bartleby](https://www.instagram.com/umbc_bartleby)

