

Career Launch Summer Series: Your Personality, Your Career

Caroline Bodnar
She/her/hers , (Ravenclaw/Hufflepuff, ENFJ,SAE)

Kacie Lawrence
She/her/hers (Ravenclaw, INFP, SAE)

Who is joining us today?

Put in the chat box:

- Major
- Year
- Have you ever taken a career or personality assessment?

What “sort” of career suits you? Try on the Career Sorting Hat !



Personal Choice: “Not Slytherin”



- career assessments like the sorting hat are tools not deterministic devices
- involve personal choice and freedom
- human behavior is more complex than one instrument
- not “pigeonholing”
- no better or worse types
- you can fit into more than one category/type/environment

Hogwarts houses

Gryffindor values courage, bravery, nerve, and chivalry.

Hufflepuff values hard work, patience, justice, and loyalty.

Ravenclaw values intelligence, creativity, learning, and wit

Slytherin house values ambition, cunning, leadership, and resourcefulness

REMEMBER: People in each house have characteristics in common, but they are individuals and there is diversity within houses.



Career Assessments in UMBCworks

The screenshot shows a web browser window with the URL `careers.umbc.edu/students/discover/self/`. The page features a left-hand navigation menu with the following items: Goal Setting, Prepare Your Documents, Build Your Network, Find an Internship or Job, Additional Career Resources for Specific Populations, Master the Interview, Negotiating & Evaluating Offers, Tips for Impressing on the Job, Applying to Graduate School, Request a Workshop, Student Org Guest Speaker Request, Request an Interview Room, and Student FAQs. The main content area is titled "FOCUS2: Career and Education Planning Online Assessment". Below the title, there is a paragraph describing the tool and a call to action to schedule a 60-minute appointment. A registration section follows, with a dark header "Create an account" and two columns: "Current Students & Alumni with myUMBC access: Retrieve the registration code now" and "All Others: Request the registration access code via email". Below this is an "Existing User" section with a "Log in" link. A "FOCUS 2 Follow Up Activity" section is also visible. The bottom of the page features the UMBC logo and the Career Center logo with the tagline "BUILD YOUR FUTURE HERE".

Assess Your Strengths, Skills & In x +

careers.umbc.edu/students/discover/self/

Goal Setting ▶

Prepare Your Documents ▶

Build Your Network ▶

Find an Internship or Job ▶

Additional Career Resources for Specific Populations ▶

Master the Interview ▶

Negotiating & Evaluating Offers ▶

Tips for Impressing on the Job ▶

Applying to Graduate School ▶

Request a Workshop ▶

Student Org Guest Speaker Request ▶

Request an Interview Room ▶

Student FAQs ▶

FOCUS2: Career and Education Planning Online Assessment


This online self-assessment tool provides you with personalized career exploration and planning services. Based on your interests, your personality, your talents and your values, FOCUS2 will provide a customized report listing careers that match these areas.

Take the FOCUS2 assessment, then, schedule a **60-minute FOCUS2 appointment** with a career advisor to discuss your results.

Create an account



Current Students & Alumni with myUMBC access: Retrieve the registration code now	All Others: Request the registration access code via email
--	--

Existing User
[Log in](#)

 [FOCUS 2 Follow Up Activity](#)

Myers-Briggs Type Indicator (MBTI)

The most widely used personality inventory in the world, the MBTI will provide you with insight about your personality and preferences. Knowing your own preferences can help you understand your strengths and the type of work environment and activities you might enjoy. The career report of the MBTI provides occupational lists, showing the occupations most selected and least selected by your personality type. The MBTI takes about 45 minutes to complete online, and must be followed by a **60-minute in-person interpretation with a Career Specialist** to receive your



A next step: FOCUS 2 Assessment

- Online self-assessment that helps you explore career options, clarify your path, and find resources to help you select the right career for you
- Access via the Career Center's website (free!)
- Get results instantly
- Meet with a Career Specialist (60- min appointment) to discuss your results (optional)

**ASSESS YOUR SKILLS,
WORK INTERESTS,
VALUES,
PERSONALITY
& LEISURE
PREFERENCES**

**SELECT THE
MAJOR AREA OF STUDY
THAT IS BEST FOR YOU**

FOCUS

**A TOOL YOU CAN USE IN
ALL STAGES
OF YOUR CAREER PLANNING**

**IDENTIFY YOUR
PERSONAL
DEVELOPMENT
NEEDS**

**EXPLORE
OCCUPATIONS,
REFINE YOUR OPTIONS**

**LINKS TO SITES
FOR RESUME TUTORIAL
JOBS, SCHOOLS,
INTERNSHIPS,
FINANCIAL AID, etc**

FOCUS 2 Assessments



Work Interest Assessment

RESULTS
Start Over



Values Assessment

100% Complete

RESULTS
Review
Start Over



Personality Assessment

RESULTS
Start Over



Skills Assessment

100% Complete

RESULTS
Review
Start Over



Leisure Assessment

START

Combine Assessments

4/5 Completed



FOCUS 2 Results Sample



Combine The Results

52 Occupations appear in 3 of the Assessments you have Completed.

SAVED	OCCUPATION	GREEN JOBS	BRIGHT OUTLOOK	SUPPORTING MAJORS/PROGRAMS AT UNIVERSITY OF MARYLAND-BALTIMORE COUNTY	SALARY	JOB FAMILY	WORK	VALUES	PERSONALITY	SKILLS
	Biopsychologist			Biology/Biological Sciences Biotechnology Marine Biology Mathematics Statistics Biopsychology Neuroscience Psychology	\$94,650.00	Life, Physical, & Social Science	-			

Holland Codes: Interests Assessment

Realistic (*doers*)

Investigative (*thinkers*)

Artistic (*creatives*)

Social (*helpers*)

Enterprising (*persuaders*)

Conventional (*organizers*)

Holland Codes



REALISTIC



INVESTIGATIVE



ARTISTIC

Holland Codes



SOCIAL



ENTERPRISING



CONVENTIONAL

Guess Oprah's main interest area



Realistic
Investigative
Artistic
Social
Enterprising
Conventional



Myers-Briggs Type Indicator (MBTI)

- Psychologist Carl Jung's theory:
 - Personality is based on how you **take in information** and how you **make decisions**
- An assessment of personality preferences, NOT ability, interests, or values
 - We provide a career report that shows how your type affects your career choice, your career exploration, career development, and which jobs are most attractive to your type
 - Must make interpretation appt to receive results

MBTI: 16 Personality Types

Extraverted or **I**ntroverted?

Where you prefer to get your energy

Sensing or **I**Ntuition?

How you prefer to take in information

Thinking or **F**eeling?

How you prefer to make decisions

Judging or **P**erceiving?

How you prefer to interact with your environment

MBTI: 16 Personality Types

ISTJ	ISFJ	INFJ	INTJ
ISTP	ISFP	INFP	INTP
ESTP	ESFP	ENFP	ENTP
ESTJ	ESFJ	ENFJ	ENTJ

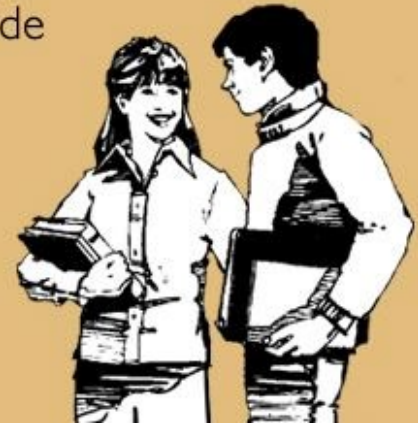
E versus I

MBTI: Extraversion vs. Introversion

It's Party Time!



80% of my conversations with others occur inside my head.



your eCards

MBTI: Extraversion vs. Introversion

You might prefer Extraversion...

- “Too bad the night has to end!”
- “Everything's more fun with a friend.”
- “I love getting to know new people.”

You might prefer Introversion...

- “That was fun, but I need to decompress!”
- “I like being with others, but I also enjoy spending time alone.”
- “I prefer to hang out with my closest friends.”

S versus **N**

What do you see?



MBTI: Sensing vs. Intuition

You might prefer Sensing...

- “I see a giant gorilla wearing some kind of combat gear, and two people in a flying red car. There’s a tree, two tropical flowers, a lake, six rocks on a hillside...”

You might prefer Intuition...

- “This reminds me of *Back to the Future*. Are those people visiting from the future? Or maybe they’re visiting from the past. And the gorilla is a hyperintelligent warlord who uses his giant spear to wield solar power that controls the Earth’s gravity...”

T versus F

What would you do?

You are the coach of a 10-year-old soccer team. The team recently won a big tournament, and now you have been invited to an international tournament in Ireland!
The whole team is very excited.

Unfortunately, you are only able to take 14 players, and there are 18 players on the team.
How do you decide which players to take?

MBTI: Thinking vs. Feeling

You might prefer Thinking...

- “Bring the best players so we have the best chance at winning.”
- “Let’s have a tryout.”
- “The most important thing is to be fair and impartial.”

You might prefer Feeling...

- “We shouldn’t go if we can’t bring everyone.”
- “Can we raise money so everyone can come?”
- “The most important thing is to be compassionate and sensitive.”

J versus P

What would you do?

You and your friends are going on a road trip! Woohoo!

Make a list of the things you
would do to prepare.

Share with the group (put your name in the chat and
we will call on you)

MBTI: Judging vs. Perceiving

You might prefer Judging...

- “Make a day-to-day itinerary of where we will stop and map out our route.”
- “Contact everyone who is going and make a list of who will bring which items.”
- “Figure out which hotels have the best deals and are closest to our stops.”
- “Get my car tuned up in case I end up driving.”

You might prefer Perceiving...

- “Decide where we want to go.”
- “Get some money.”
- “Pack clothes.”
- “Wing it!”

WHO ARE YOU?

HARRY POTTER MBTI CHART

16 MBTI types Harry Potter

THE SCAMMER
ISTJ
ROVAVIA CRAB

INTROVERTED | SENSING | THINKING | JUDGING

DEFINIED BY THEIR HONOR AND DUTY, TAKE ANY TASK SERIOUSLY AND MOVE TO HELP THEIR FRIENDS. REST, SOMETHING RESERVED AND PREFER TO WORK ALONE, BUT CAN MAKE GREAT TEAM MEMBERS IF THE NEED ARISES. HIGHLY VALUE TRADITIONS AND LONELINESS AND OFTEN PUT DUTY BEFORE PLEASURE.

THE DEFENDER
ISFJ
ROVAVIA LONGBOTTOM

INTROVERTED | SENSING | FEELING | JUDGING

TRADITIONAL, LOYAL, KIND AND OBEDIENT OF OTHERS. VALUE STABILITY AND REGULAR ROUTINE AND ARE OFTEN CONSISTENT WITH WORK. KNOWN FOR THEIR KNOWLEDGE AND WILLINGNESS TO GO TO ANY LENGTHS TO HELP THOSE IN NEED. STRIVE TO CREATE AN ORDERLY ENVIRONMENT.

THE COUNSELOR
INFJ
SERIUS LOVE

INTROVERTED | INTUITIVE | FEELING | JUDGING

SEEK MEANING AND CONNECTION IN IDEAS, RELATIONSHIPS AND THE NATURAL WORLD. WANT TO UNDERSTAND WHAT MOTIVATES PEOPLE AND ARE INDIFFERENT ABOUT OTHERS. ORGANIZED AND KEENLY IN IMPLEMENTING THEIR IDEAS. FAITHFUL, INTUITIVE, AND COMPLEX BY NATURE.

THE STRATEGIST
INTJ
ERICK MALFOY

INTROVERTED | INTUITIVE | THINKING | JUDGING

NATURAL LEADERS THAT STRIVE FOR PERFECTION. RESERVING, INTERESTED, LOGICAL AND EASY ADAPTABLE. QUICKLY SEE PATTERNS IN GENERAL EVENTS AND DEVELOP LONG-RANGE EXPLANATIONS FOR THEM. CRITICAL AND INDEPENDENT, TEND TO HAVE AN AURA OF DEFINITE SELF-CONFIDENCE.

THE CRAFTSMAN
ISTP
BARRY POTTER

INTROVERTED | SENSING | THINKING | PERCEIVING

PREFERS INDEPENDENT, ADVENTUROUSNESS. HOWS LIKE WATER. INTERESTED IN HOW OTHERS INTERESTED IN THEIR OWN PASTIMES RATHER THAN OTHERS. DO NOT BELIEVE IN BELIEF IN THEIR PASTIMES OR TRYING TO DO THEIR OWN THING. ORGANIZE THINGS USING LOGICAL PRINCIPLES AND VALUE EFFICIENCY.

THE ARTIST
ISFP
DIEKUS HAGRID

INTROVERTED | SENSING | FEELING | PERCEIVING

QUIET, FRIENDLY, SENSITIVE AND KIND. LOYAL AND COMMITTED TO THE PEOPLE AND VALUES THAT THEY CARE ABOUT. DISLIKE DISAGREEMENTS AND CONFLICT AND MAY FORCE OTHERS TO AGREE WITH THEM. LIKE TO HAVE THEIR OWN SPACE AND OFTEN TAKE MATTERS TOO PERSONALLY.

THE DREAMER
INFP
LUNA LOVEGOOD

INTROVERTED | INTUITIVE | FEELING | PERCEIVING

IDEALISTIC, LOYAL TO THEIR VALUES AND TO THE PEOPLE WHO ARE IMPORTANT TO THEM. CREATIVE, QUICK TO SEE POSSIBILITIES, CAN BE CATALYST FOR OTHERS IDEAS. DESIRE TO HELP OTHERS AND HELP THEM FULFILL THEIR POTENTIAL. ADAPTABLE, FLEXIBLE, AND ACCEPTING.

THE ARCHITECT
INTP
HERMIONE GRANGER

INTROVERTED | INTUITIVE | THINKING | PERCEIVING

A NATURAL-BORN THINKER, RESPECTFUL, THEORETICAL, ANALYTICAL AND LOGICAL. OFTEN COME UP WITH SYSTEMS WITH WHICH TO SOLVE PROBLEMS. QUICK TO CONSIDER OTHERS, INTERESTED MORE IN IDEAS THAN IN SOCIAL INTERACTION. HAVE A STRONG ABILITY TO STAY ON TASK.

THE PROMOTER
ESTP
GORTON WEASLEY

EXTROVERTED | SENSING | THINKING | PERCEIVING

FEELING AND PLEASANT. THE WANT TO GET SPECIALLY TO SOLVE THEIR PROBLEMS USING THEIR CLEVER WIT AND CUNNINGNESS. ENJOY SELLING THEIR IDEAS, SHOW ACTIVITIES INVOLVING PHYSICAL ACTION AND RISK-TAKING, AND ESPECIALLY THING ON THE SUBJECT OF COMPETITION.

THE PERFORMER
ESFP
FRID & GEORGE WEASLEY

EXTROVERTED | SENSING | FEELING | PERCEIVING

ENJOYING, FRIENDLY, AND ACCEPTING. ENJOY ANY LEVELS OF LIFE, PEOPLE, AND MATERIAL OBJECTS. ENJOY WORKING WITH OTHERS TO MAKE THINGS HAPPEN AND MAKE ANYTHING FEASIBLE AND SPONTANEOUS. ADAPT READILY TO NEW TOOLS AND ENVIRONMENTS. HATE BEING ALONE.

THE CHAMPION
ENFP
RON WEASLEY

EXTROVERTED | INTUITIVE | FEELING | PERCEIVING

WARM, ENTHUSIASTIC, ENERGETIC AND FULL OF AMBITION. ADAPTABLE TO MANY SITUATIONS AND OFTEN SEE THE FUTURE POSSIBILITIES IN THE SCENE. IN MANY ASPECTS OF WHAT THEY DO AND HOLD THEMSELVES CLOSE TO THE HEART. FIRM BELIEVER THAT LIFE IS FOR THE LIVING.

THE INVESTOR
ENTP
SERIUS BLACK

EXTROVERTED | INTUITIVE | THINKING | PERCEIVING

QUICK, ENERGETIC, STIMULATING, AGILE AND OUTSPOKEN. SUCCESSFUL IN SOLVING NEW AND CHALLENGING PROBLEMS. GREAT AT GENERATING CONCEPTUAL POSSIBILITIES AND THEMATICALLY THEM STRATEGICALLY. BORING BY ROUTINE, WILL SELECT TO DO THE SAME THING THE SAME WAY.

THE SUPPORTER
ESTJ
HIMMEL MURKIN

EXTROVERTED | SENSING | THINKING | JUDGING

PRACTICAL, REALISTIC, MATTER-OF-FACT, AND QUICK TO IMPLEMENT DECISIONS. ORGANIZE PROJECTS AND PREFER TO SET THINGS DONE. FOCUS ON GETTING RESULTS IN THE MOST EFFICIENT WAY POSSIBLE AND TAKE CARE OF ROUTINE DETAILS. PROFICIENT IN IMPLEMENTING THEIR PLANS.

THE PROVIDER
ESFJ
LILLY EVANS POTTER

EXTROVERTED | SENSING | FEELING | JUDGING

WARMHEARTED, ORGANIZATIONAL AND COOPERATIVE. WANT HAPPINESS IN THEIR WORLD AND WORK BOTH THEMSELVES AND OTHERS. ARE VERY HELPFUL WITH OTHERS TO COMPLETE TASKS ACCURATELY AND ON THE SPOT. PREFER WHEN OTHERS HELP IN THEIR OWN-FUN-LIFE AND TRY TO PROVIDE IT.

THE TRAINER
ENFJ
ALBUS DUMBLEDORE

EXTROVERTED | INTUITIVE | FEELING | JUDGING

WARM, EMPATHETIC, RECEPTIVE AND RESPONSIBLE. HIGHLY ATTUNED TO THE KNOWLEDGE, NEEDS AND MOTIVATIONS OF OTHERS. PREFER HELPING OTHERS. WANT TO HELP THEM FULFILL IT. MAY ACT AS CATALYST FOR INDIVIDUAL AND GROUP GROWTH. PREFER INSPIRING LEADERSHIP.

THE MAVERICK
ENTJ
JAMES POTTER

EXTROVERTED | INTUITIVE | THINKING | JUDGING

BLUNT, DECISIVE, AND QUICK TO ASSUME LEADERSHIP. OFTEN SEE LOGICAL AND INEFFICIENT PROCESSES AND MAKING DEVELOP COMPREHENSIVE SYSTEMS TO SOLVE PROBLEMS. ENJOY LONG-TERM PLANNING AND GOAL-SETTING. FORCEFUL AND DETERMINATE ABOUT THEIR IDEAS.

Who's your character?

STAR WARS personality chart

Star Wars 16 MBTI types

<p>ISTJ</p>  <p>Owen Lars</p> <p>The Inspector</p> <p>Responsible, loyal, and hard working. Have an acute sense of right and wrong and work to preserve established norms and traditions. Somewhat reserved and prefer to work alone, but can make great team members if the need arises. Characterized by the ability to work hard and make sacrifices to keep society running smoothly.</p>	<p>ISFJ</p>  <p>C-3PO</p> <p>The Protector</p> <p>Traditional, loyal, quiet, and kind. Extremely intuitive about people and sensitive to others' needs. Often fear change and try hard to maintain peace and order. Tend to serve behind the scenes without seeking recognition. Like routine and possess excellent follow-through skills. Characterized by the ability to identify the needs of others and meet them selflessly.</p>	<p>INFJ</p>  <p>Obi-Wan Kenobi</p> <p>The Counselor</p> <p>Introspective, caring, sensitive, and complex. Strive for peace and seek to develop and guide others. Value self-control and the pursuit of the greater good. Live their lives with a great purpose, and devoted to the causes they believe in. Characterized by the ability to connect with the essence of others and to identify their strengths.</p>	<p>INTJ</p>  <p>Palpatine</p> <p>The Mastermind</p> <p>Objective, independent, thorough, and adaptable, with well-developed powers of concentration. Natural leaders who strive for perfection. Talented in bringing ideas from conception to reality. Expect perfection from themselves as well as others. Characterized by their desire to produce mastery and achievement that reflects their brilliance.</p>
<p>ISTP</p>  <p>Chewbacca</p> <p>The Crafter</p> <p>Independent and adventurous, yet quiet and reserved. Interested in how and why things work. Adaptable and spontaneous. Likes to live in the moment. Loyal to their peers and to their internal value systems, but not overly concerned with respecting rules if they get in the way. Characterized by their ability to get things done.</p>	<p>ISFP</p>  <p>Bail Organa</p> <p>The Artist</p> <p>Quiet, serious, sensitive, and kind. Loyal and faithful. Diligence conflict. Have a keen appreciation for beauty due to their highly developed senses. Likely to be original and creative. Highly affectionate, but can be difficult to get to know. Live in the present and yearn for freedom. Characterized by their desire to help and contribute to the well-being of others.</p>	<p>INFP</p>  <p>Luke Skywalker</p> <p>The Idealist</p> <p>Introspective, private, creative, and highly idealistic. Driven by their values, and interested in helping people and serving humanity. Adaptable and laid-back unless a strongly-held value is threatened. Imaginative, often talented in language and writing. Characterized by their ability to be present with another person on a deep level.</p>	<p>INTP</p>  <p>Yoda</p> <p>The Architect</p> <p>Logical, original, reserved, and curious. Focus on ideas, theories, and explanations. Have a calm, serious exterior, but a deeply passionate soul. Appreciate and respect intelligence in others. Have a strong ability to stay on task. Characterized by their ability to design sophisticated systems and theories that improve the lives of others.</p>
<p>ESTP</p>  <p>Han Solo</p> <p>The Promoter</p> <p>Friendly, adaptable, and action-oriented "doers" who are focused on immediate results. Think on their feet and thrive in crisis. Informal risk-takers who live fast-paced lives. Never allow rules to get in the way of their ambitions. Straightforward and realistic. Like criticism well. Characterized by their ability to get things done and work well with others.</p>	<p>ESFP</p>  <p>Wicket</p> <p>The Performer</p> <p>Outgoing, friendly, and fun-loving. Likely to be the center of attention in social situations. Love new experiences and live for the moment. Adapt readily to new people and environments. can get bored easily. Enjoy material comforts and want the best of what life has to offer. Characterized by their ability to create positive experiences for others.</p>	<p>ENFP</p>  <p>Qui-Gon Jinn</p> <p>The Champion</p> <p>Enthusiastic, idealistic, inspiring, and creative. Actively advocate for what they feel to be important, attracting others to their causes with excellent people skills, warmth, and positivity. Excited by new ideas but tend to get bored with details. Characterized by their ability to inspire and motivate others with their enthusiasm and passion for life.</p>	<p>ENTP</p>  <p>R2-D2</p> <p>The Inventor</p> <p>Quick, innovative, curious, and resourceful. Excellent ability to understand concepts and apply logic to find solutions. Introspective and carefree nonconformists who are bored by routine. Thrive at finding crafty solutions to technical problems. Characterized by their ability to pursue and succeed at any risk-taking venture.</p>
<p>ESTJ</p>  <p>Darth Vader</p> <p>The Supervisor</p> <p>Practical, realistic, organized, and strategic. Possess natural leadership qualities. Strict boundary setters who take personal responsibility very seriously. Intensely focused on getting results and seek ways to do so in the most efficient way possible. Characterized by their ability to preserve traditions and provide security for their loved ones.</p>	<p>ESFJ</p>  <p>Jar Jar Binks</p> <p>The Provider</p> <p>Warmhearted, conscientious, and popular. Tend to put the needs of others over their own needs. Sensitive to criticism and need positive reinforcement to feel good about themselves. Supportive and generous, can sometimes come across as overbearing due to their capacity for empathy. Characterized by their genuine concern for others, which drives everything they do.</p>	<p>ENFJ</p>  <p>Padme Amidala</p> <p>The Giver</p> <p>Warm, empathetic, and charismatic with excellent people skills. Highly sensitive to the emotions and needs of others, likely to find hidden potential in others and strive to help them fulfill it. Take their obligations to others very seriously. Characterized by their ability to help develop others, and making a lasting difference in people's lives.</p>	<p>ENTJ</p>  <p>Leia Organa</p> <p>The Executive</p> <p>Assertive, strategic, and decisive, with a natural desire to lead. Intelligent and well-informed, value knowledge and competence. Are quick to see illogical and inefficient systems, and develop intelligent solutions in response. Characterized by their ability to lead confidently and reach goals with excellence.</p>

DC Comics™
Personality Profiles



Poison Ivy is intelligent and lives in her own inner world. She is very capable of seduction and knows how to lure people into her reality. She is in touch with nature, and feels a strong moral obligation to protect what she believes in. Her strongest drive is protecting the environment and the plants which she loves so much.



Bruce Wayne is intelligent and extremely intellectual. He is a billionaire, playboy and philanthropist. He has a strong goal to seek vengeance for his parents' death, and bring justice to criminals of Gotham. He trains himself physically, and crafts his own persona solely on his intelligence. Batman is capable of becoming a superhero without any superpowers, because of his powerful intellect.



John Stewart is an architect and a veteran. Stewart is reliable and loyal, but also logical. He is the back-up for Green Lantern, and comes in when he is most needed. He is strong-willed and follows what he believes in.



Bane is intelligent and strategic minded. He is in touch with the physical world around him, and is very strong. He is brave, and when he sets his mind to something he is unstoppable.



Wonder Woman is outgoing and always supportive. She is caring, friendly, and intensely loyal. She is nearly the perfect character, with a strong will and a warm heart. Wonder Woman never gives up, and has a larger than life presence. She is capable of being what everyone around her truly needs.



Founding member of the Justice League of America, Aquaman is a powerful superhero. He is capable of surviving the earth and seas greatest depths of pressure and temperature. He is outgoing and very skilled at commanding a strong political presence. He is also a capable leader and commander.



Hawkman is very brave, and faces dangerous threats without backing down. He is headstrong and reliable, with a strong sense of duty.



Catwoman is extremely quick and in touch with the physical world. She is very headstrong and tricky, and lives in the grey area of morality. She challenges authority and likes to make her own set of rules that she lives by.



Barry Allen is warm and introverted. He is very laid back and doesn't like to rock the boat too much. He is extremely intelligent, and often lives in the depths of his inner mind. He believes strongly in doing what is right, living by his strong internal moral



The Riddler takes joy in incorporating riddles and puzzles into his crimes, leaving behind clues for the authorities to attempt to figure out. He takes pride in his own intellectual superiority and is smooth talking, yet a bit quirky. He is often extremely stuck inside his own mind, creating a reality that is apart from the real world.



Clark Kent is very selfless and kind-hearted. He believes that he has a duty to protect others, even though it is not his job to do so. He is reliable and supportive to those around him. He is outgoing when he needs to be, but enjoys being alone and recharging by himself. He is a very strong and harmonious character, who just wants to make others happy.



Zatanna is a powerful magician and a natural performer. She is very bubbly, fun and charming. She loves attention and being in the spotlight, but is also a bit of a loner. She occasionally lets her emotions get the best of her, but is very confident and independent.



Harley Quinn, a key member of the Suicide Squad, is a strong and intensely loyal character. She develops connections with people and does not break those connections no matter what. She has an outgoing and offbeat sense of humor, and is a little zany sometimes. Although she is seen as somewhat mad, she is extremely intelligent and imaginative. She is romantic and outgoing, and driven strongly by her emotions.



The Joker is a criminal mastermind, and is extremely intelligent. He has a sadistic sense of humor, and is an outgoing character. The Joker has no superpowers, but relies solely on his own genius to construct weapons. Living in his own reality, the Joker has a way of pulling others into his madness, with his charismatic personality.



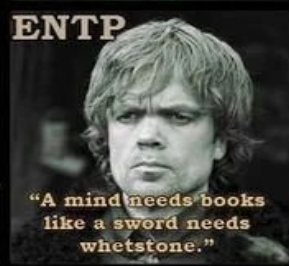
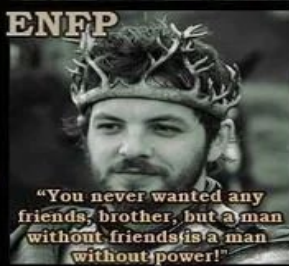
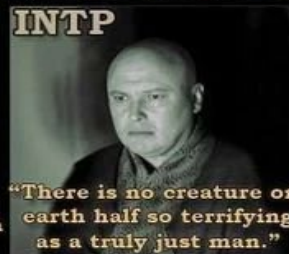
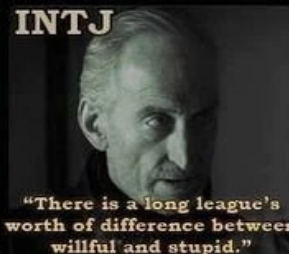
Starfire is outgoing and strong-willed. She holds onto the traditions of her home planet, and is loyal to her people. She is the glue that keeps her team together, and does what she can't be supportive of them. She is sometimes seen as a naive, but always strong character.



Hal Jordan is outgoing and comfortable in the spotlight. He is aware of the physical world around him, and is very fact-paced. He is extremely brave and capable of taking on his enemies no matter what it takes.

16 MBTI types
DC Comics

16 MBTI types Game of Thrones



Schedule an Appointment

- Login to UMBCworks
- Click **Schedule Appointment**

OR

- Call the Career Center at 410-455-2216



ANNOUNCEMENT

RESUMANIA 2014: Drop-In Resume Reviews
Need resume help before the Career Fair? Drop-In and get your resume reviewed and approved on UMBCworks **TODAY, 10/6 and TUESDAY, 10-7 from 10AM to 4PM.**

All Drop-Ins will be held in the Career Services Center on the 2nd Floor of the Math/Psych Building. Please upload your resume to UMBCworks in advance!

No appointment needed!



ANNOUNCEMENT

Make Your Appointment Online to See Us!

[Schedule Appointment](#)

MAKE AN APPOINTMENT ON-LINE VIA UMBCworks TODAY to meet with a Career Specialist or member of the Internship & Employment Team, OR call the Career Services Center front desk at 410-455-2216. Students attending SHADY GROVE should contact 301-738-6338 or usgcareerservices@umd.edu to schedule an appointment.

NETWORK

[Professional Network](#)

MORE

[Intern/Co-op/ Research/ Service/ Work PRAC Requirements](#)

[My Activity Summary](#)

[Career Explorer](#)

[View Document Library](#)

GETTING STARTED

[Account Created](#)

[Personal Profile](#)

[Academic Profile](#)

[Privacy Settings](#)

[Resume](#)

UMBC Career Center
Math/Psych, Bldg.
Rm. 201
410-455-2216
careers.umbc.edu

Meet the Staff



Get Connected – Stay Connected



facebook®

facebook.com/UMBCcareers

twitter.com/UMBCcareers



Follow us!



Follow us in MyUMBC

UMBC
works

Events Tab for Workshops &
Information Sessions



Read the Jobs-Internships and Events &
Opportunities emails each week

Upcoming Career Launch Events

Preparing for a Virtual Career Fair

Wednesday, June 17, Noon-1pm

MCC Virtual Career Fair

Friday, June 19, 10am-2pm

65+ employers registered!

Questions?

