



CHESAPEAKE BAY  
FOUNDATION

*Saving a National Treasure*

# Saving the Bay

**Carmera Thomas**  
Baltimore Program Manager

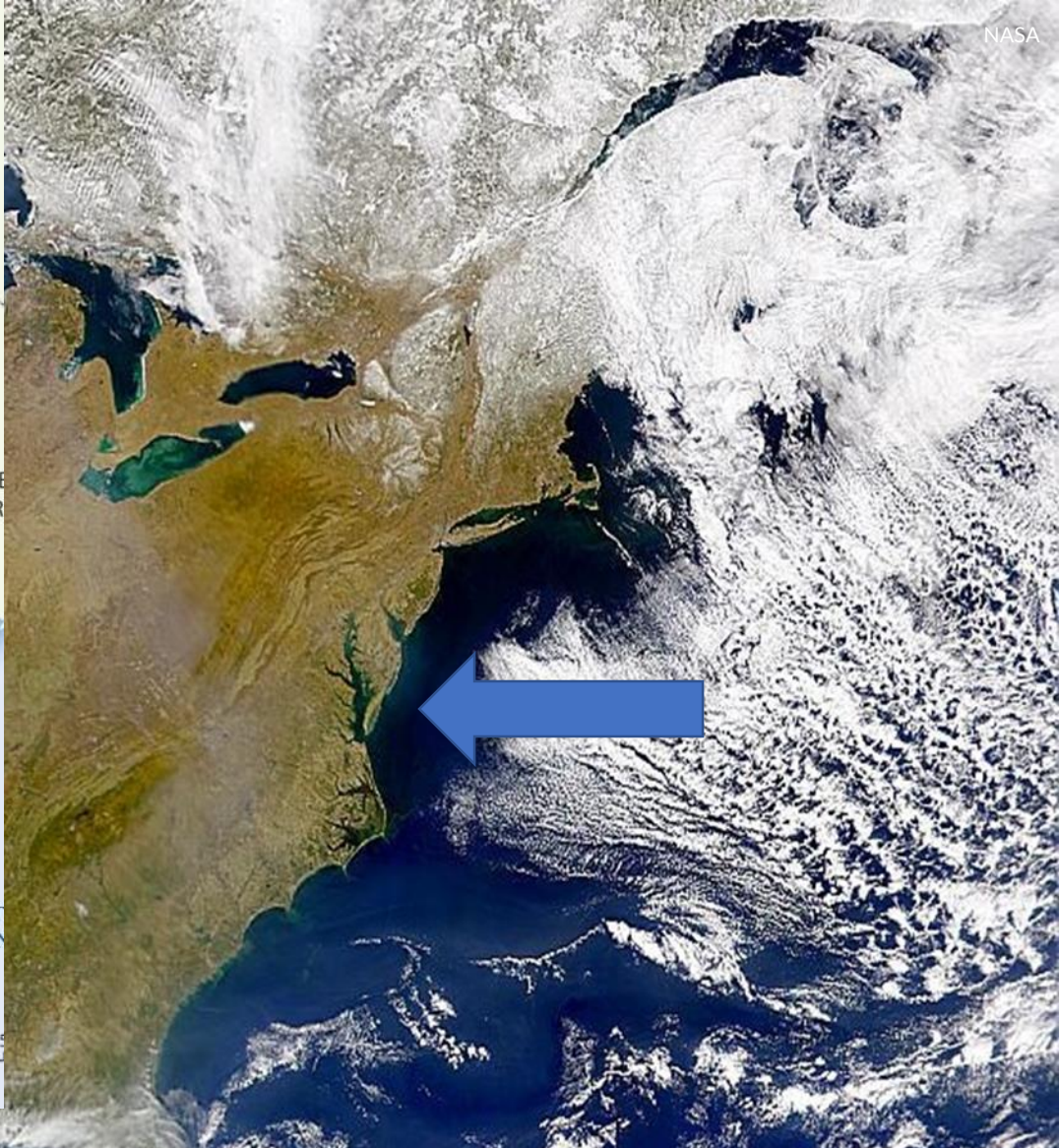


CHESAPEAKE BAY FOUNDATION  
*Saving a National Treasure*

Who is CBF?



CHESAPEAKE BAY FOUNDATION  
*Saving a National Treasure*



CHESAPEAKE BAY FOUNDATION  
*Saving a National Treasure*

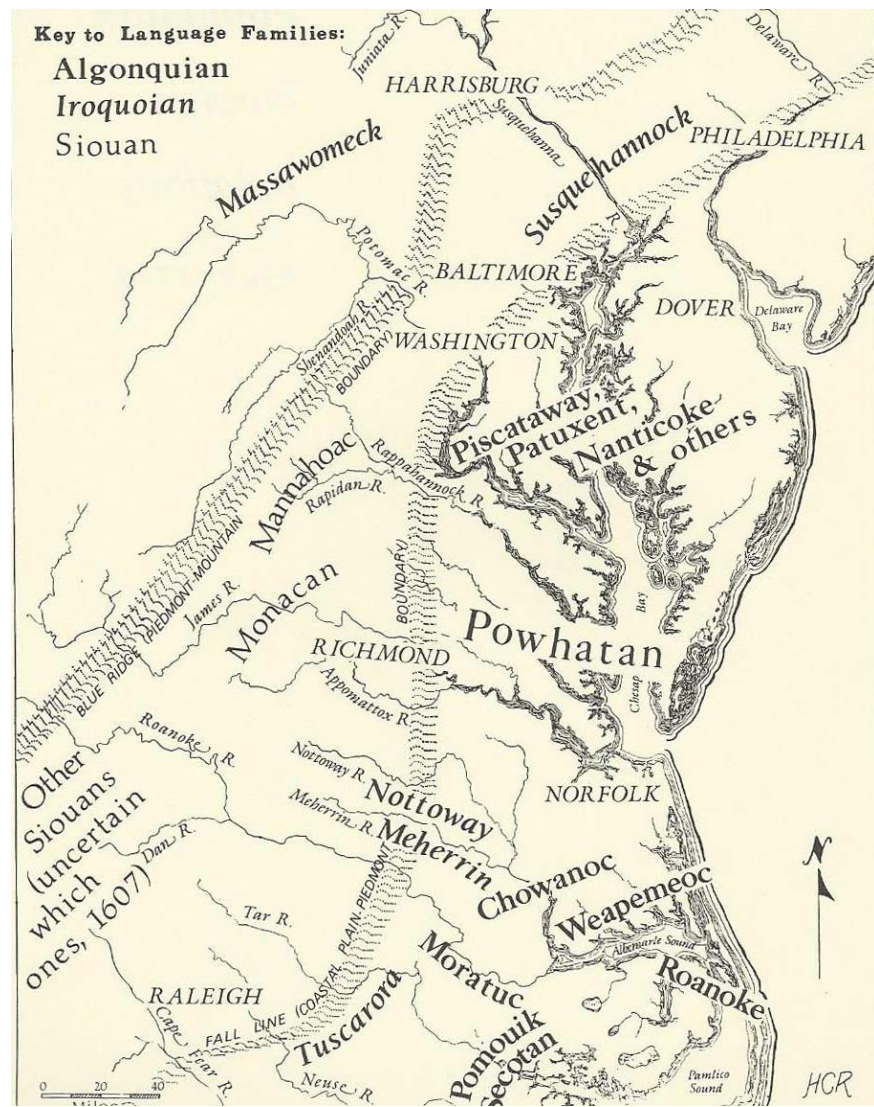
“Save the Bay”

Key to Language Families:

Algonquian

Iroquoian

Siouan



CHESAPEAKE BAY FOUNDATION  
Saving a National Treasure

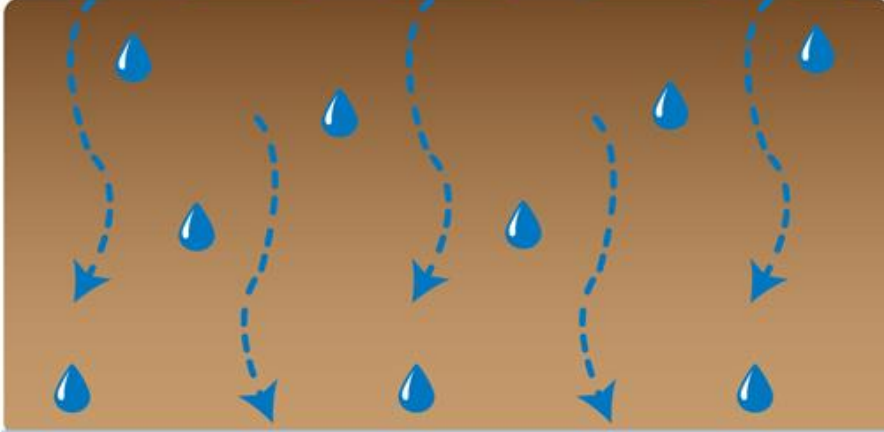
A Little History



CHESAPEAKE BAY FOUNDATION  
Saving a National Treasure

Then...

The landscape can be a  
**GREEN FILTER**



filtering pollution as the rainwater slowly sinks into the ground.

or a  
**GRAY FUNNEL**



allowing pollution and toxics to be washed into our waterways.



**CHESAPEAKE BAY FOUNDATION**  
*Saving a National Treasure*

... and Now



CHESAPEAKE BAY FOUNDATION  
*Saving a National Treasure*



# STATE of the **BAY** 2018

33 D+

-1 from 2016



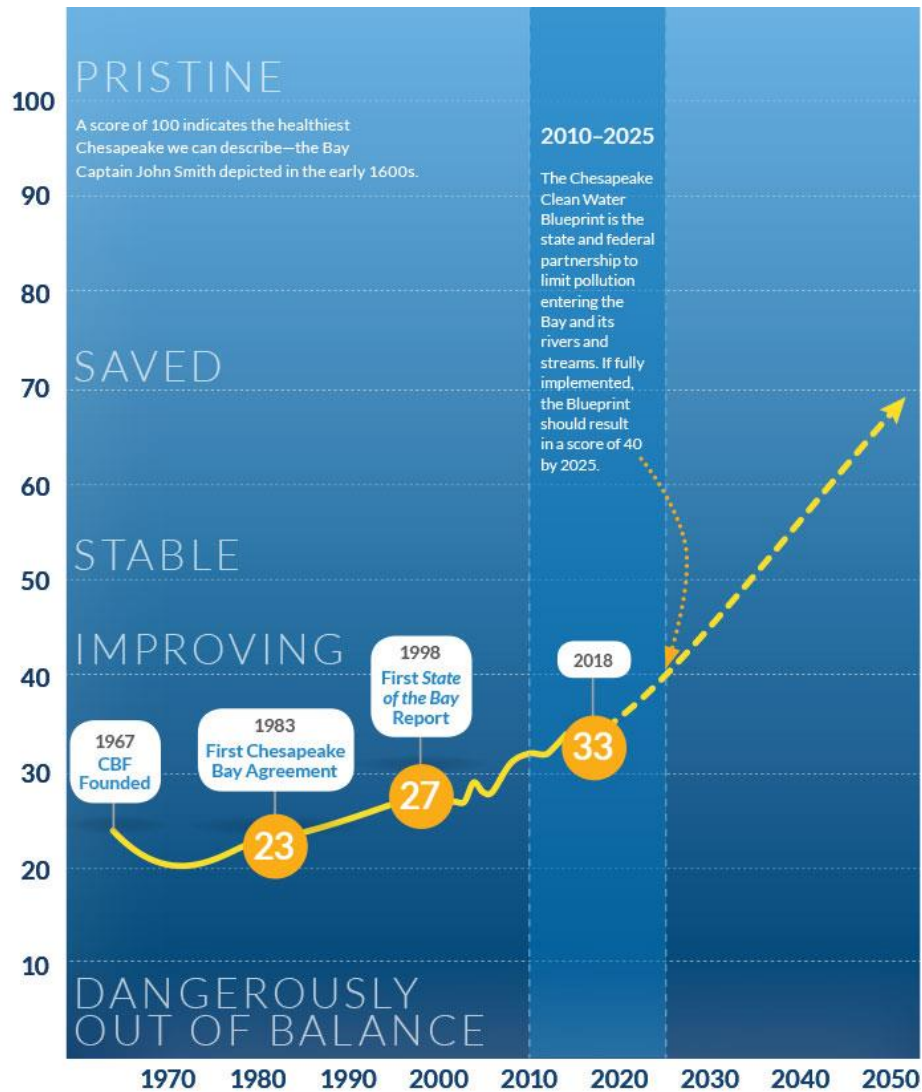
CHESAPEAKE BAY FOUNDATION  
*Saving a National Treasure*

2018 State of the Bay  
Health Index

# STATE of the BAY

	Indicator	2018 Score	Change From 2016	Grade
POLLUTION	Nitrogen	12	-5	F
	Phosphorus	19	-9	F
	Dissolved Oxygen	42	+2	C
	Water Clarity	16	-4	F
	Toxics	28	0	D
HABITAT	Forested Buffers	57	0	B
	Wetlands	42	0	C
	Underwater Grasses	25	+1	D
	Resource Lands	33	+1	D+
FISHERIES	Rockfish	66	0	A-
	Blue Crabs	55	0	B
	Oysters	10	0	F
	Shad	10	-1	F



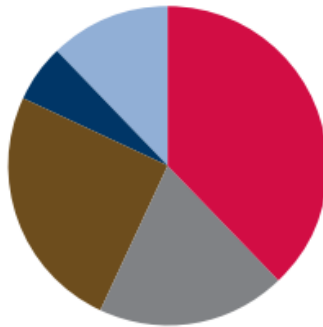


**CHESAPEAKE BAY FOUNDATION**  
*Saving a National Treasure*

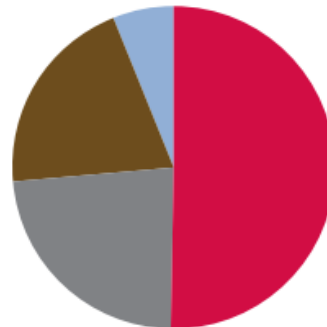
# State of the Bay Timeline

# Chesapeake Bay Watershed Water Pollution in Maryland by Type and Source

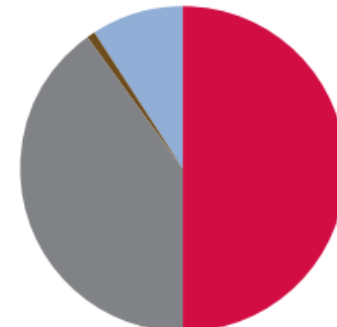
## NITROGEN




## PHOSPHORUS




## SEDIMENT



 AGRICULTURAL RUNOFF

 FORESTS

 WASTEWATER TREATMENT & FACTORIES

 URBAN & SUBURBAN STORMWATER RUNOFF

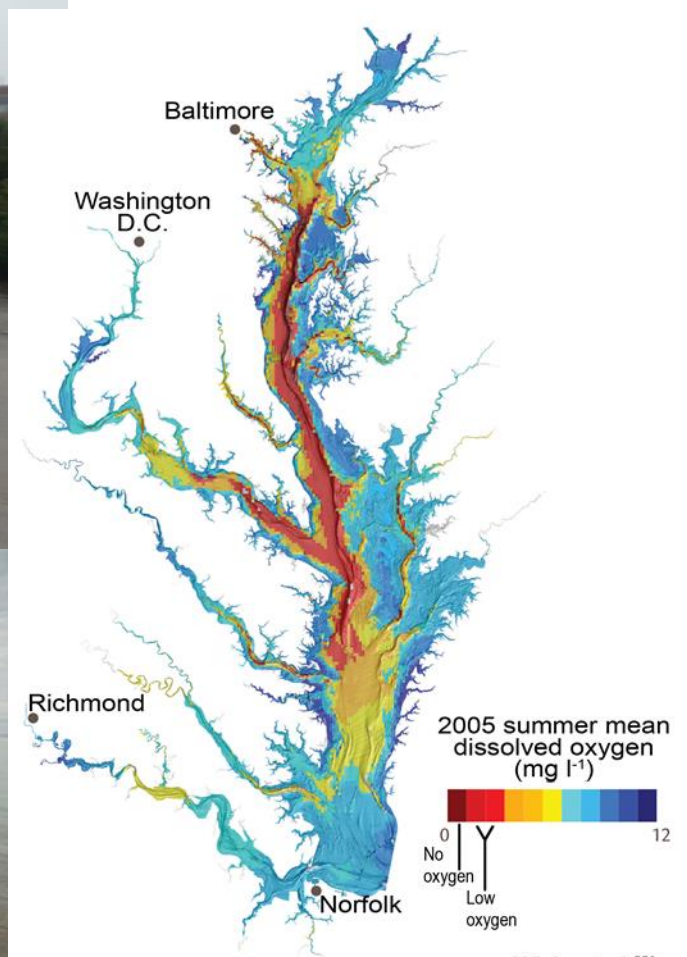
 SEPTIC

Source: Chesapeake Bay Program Chesapeake Bay Watershed Model 5.3.2



CHEESAPEAKE BAY FOUNDATION  
*Saving a National Treasure*

## Sources of Pollution



Wicks et al.<sup>558</sup>

Climate change is likely to expand and intensify “dead zones,” areas where bottom water is depleted of dissolved oxygen because of nitrogen pollution, threatening living things.



CHESAPEAKE BAY FOUNDATION  
*Saving a National Treasure*

# Climate Change

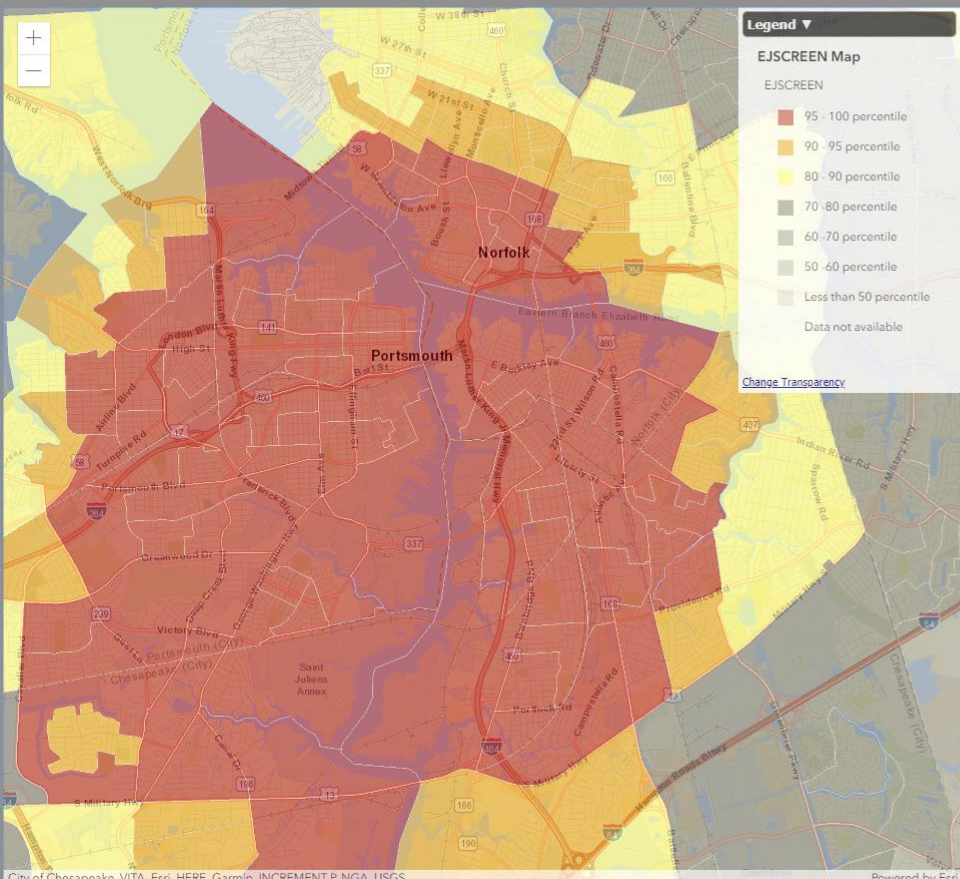
- Starts at the Community Level
- Identify Concerns & Parties Involved
- Fact Finding
  - Legal Mechanisms
  - Environmental Impact
  - Impact on the marginalized community
- Evaluate Burden
- Propose Action



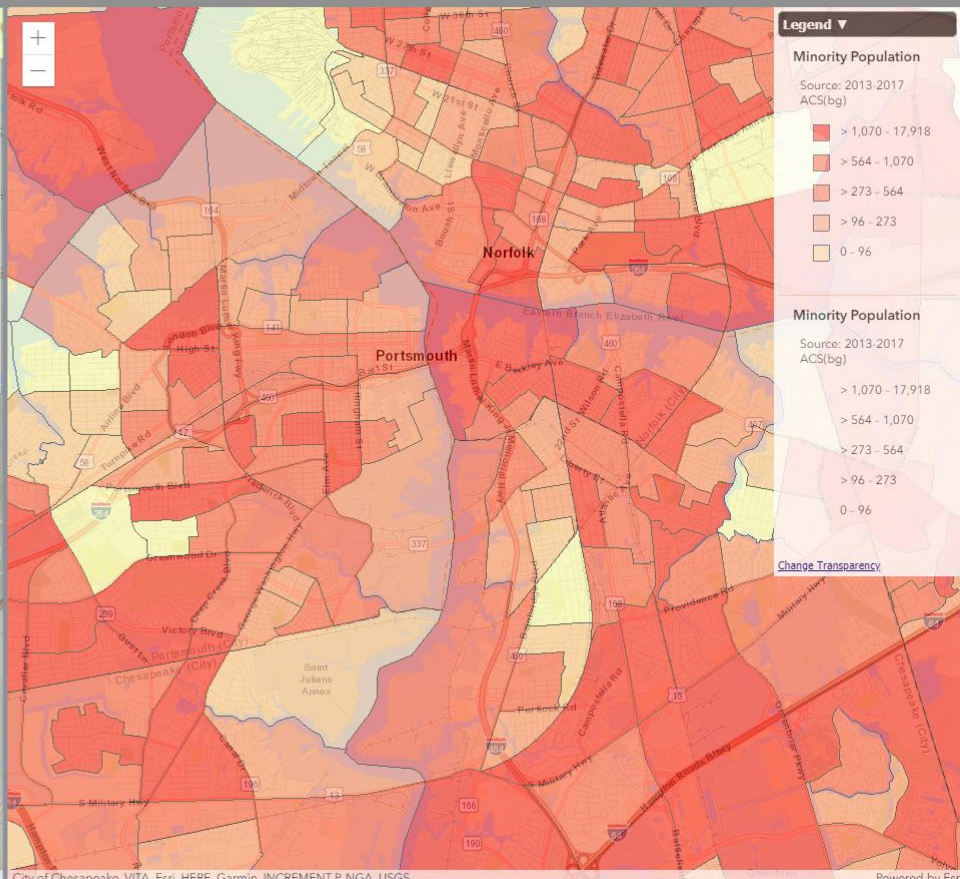
CHESAPEAKE BAY FOUNDATION  
*Saving a National Treasure*

Environmental Justice at CBF

### Superfund Proximity (site count/km distance) National Percentiles



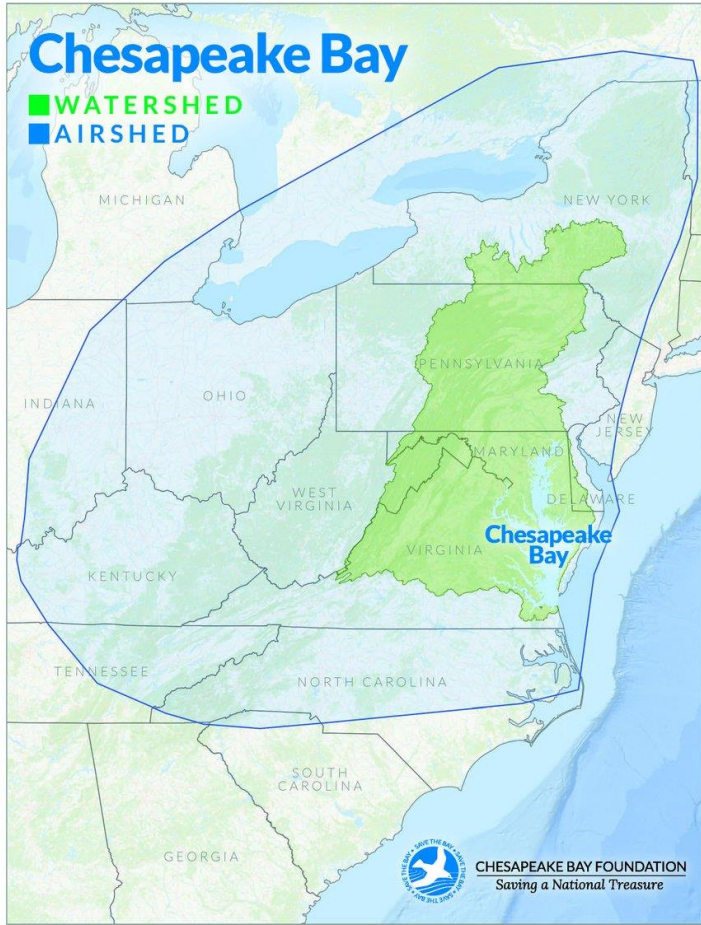
### Minority Population -- 2013-2017 ACS



**CHESAPEAKE BAY FOUNDATION**  
Saving a National Treasure

**EJ Screen**

# • Air pollution



CHESAPEAKE BAY FOUNDATION  
*Saving a National Treasure*

Climate Change



- Air Quality
  - Wheelabrator
  - Close proximity to roadways/highways
- Water Quality & Public Health
  - Basement back ups
  - Flooding
  - Direct contact with water
- Food and access to green space & recreation
  - Food distribution
  - Vacant lots
- Other
  - Trash and litter





CHESAPEAKE BAY FOUNDATION  
*Saving a National Treasure*

# Urban & Suburban Stormwater Runoff



CHESAPEAKE BAY FOUNDATION  
*Saving a National Treasure*

Litter



*Photo: Jay Fleming*



**CHESAPEAKE BAY FOUNDATION**  
*Saving a National Treasure*



**CHESAPEAKE BAY FOUNDATION**  
*Saving a National Treasure*



CHESAPEAKE BAY FOUNDATION  
*Saving a National Treasure*

# Chesapeake Clean Water Blueprint

# WHAT IS THE BLUEPRINT?

It's a unique agreement between the six Bay states; Washington, D.C.; and the EPA, designed to ensure pollution is reduced and local waterways are restored.



# HOW DOES IT WORK?



It ensures shared responsibility.



It sets incremental pollution-reduction goals.

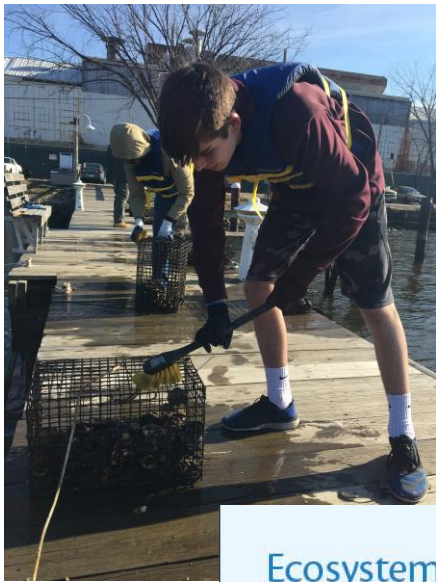


It imposes consequences for missed goals.

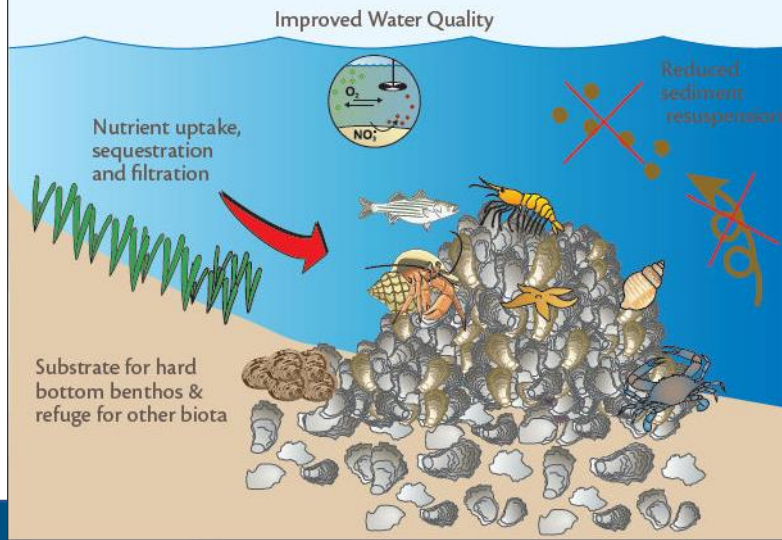


CHESAPEAKE BAY FOUNDATION  
*Saving a National Treasure*

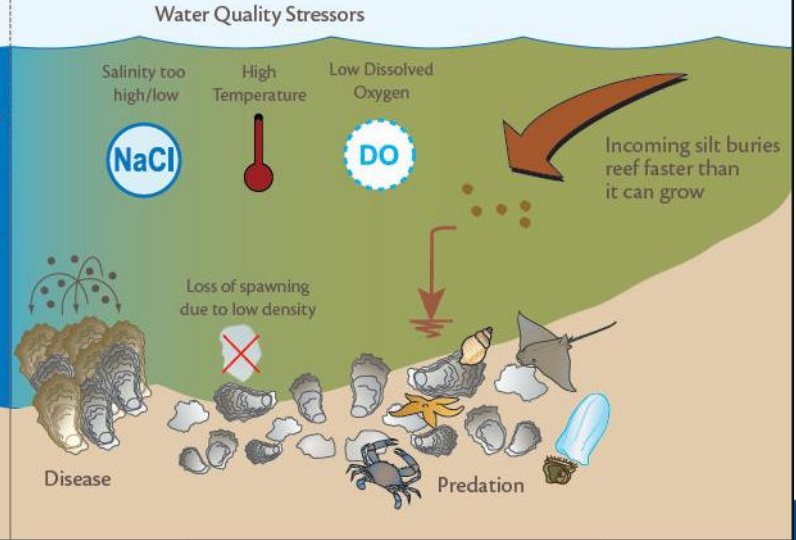
Chesapeake Clean  
Water Blueprint



## Ecosystem benefits provided by Oysters



## Ecosystem stressors to Oysters



CHESAPEAKE BAY FOUNDATION  
Saving a National Treasure

# Oyster Gardening



# REUSE REDUCE RECYCLE



CHESAPEAKE BAY FOUNDATION  
*Saving a National Treasure*



**CHESAPEAKE BAY FOUNDATION**  
*Saving a National Treasure*

**BUY FRESH  
BUY LOCAL**

**Chesapeake**

**EAT LOCAL — SAVE THE BAY**  
**WWW.BUYLOCALCHESAPEAKE.ORG**

*Amazing Grazing*

Directory of Local Sources for Grass-fed Meat, Poultry, and Dairy Products in DE, MD, VA, and WV

**FUTURE HARVEST**

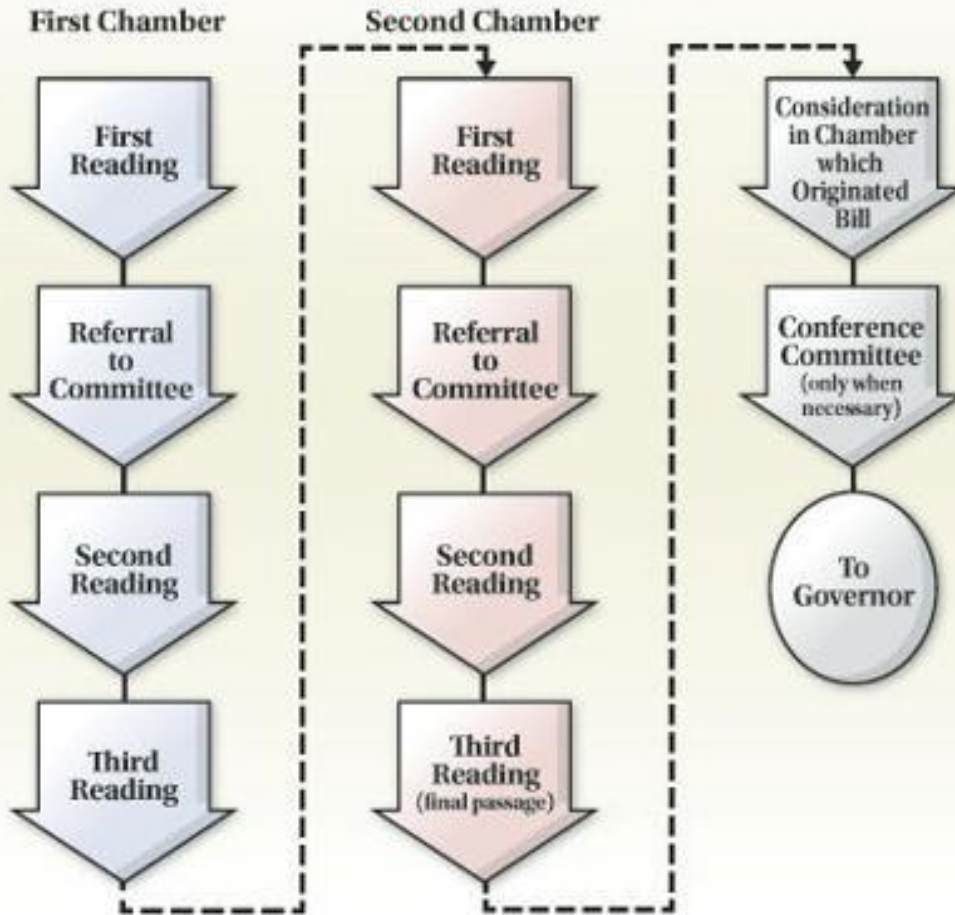
MARYLAND  
**SHELLFISH GROWERS**  
NETWORK



**CHESAPEAKE BAY FOUNDATION**  
*Saving a National Treasure*

**Buy Fresh Buy Local**

# The Progress of a Bill



- Facilitate dialogue
  - DEIJ Committee (internally) & Community Advocacy (externally)
- Learn and review- awareness and access
- Prioritize goals & action
- Implement strategies
- Identify needs, conduct trainings and capacity building throughout





Questions??



CHESAPEAKE BAY FOUNDATION

*Saving a National Treasure*

**CBF Website:** [www.cbf.org](http://www.cbf.org)



[facebook.com/chesapeakebay](https://facebook.com/chesapeakebay)



[twitter.com/chesapeakebay](https://twitter.com/chesapeakebay); [@chesapeakebay](https://twitter.com/chesapeakebay)



[ram.com/chesapeakebayfoundation/](https://instagram.com/chesapeakebayfoundation/)  
[@chesapeakebayfoundation](https://instagram.com/chesapeakebayfoundation/)



**CHESAPEAKE BAY FOUNDATION**  
*Saving a National Treasure*

**Stay Connected!**