

The background is a light blue grid. The top row contains a small tooth icon in the first cell, a larger tooth icon in the second cell, a mouth with blue braces in the third cell, a tooth icon with a cavity in the fourth cell, and a small tooth icon in the fifth cell. The bottom row contains a small tooth icon in the first cell, a larger tooth icon in the second cell, a tooth icon with a cavity in the fourth cell, and a small tooth icon in the fifth cell. Two dental mirrors are positioned vertically on the left and right sides of the grid, with their handles extending from the top row and their heads pointing towards the bottom row.

# WELCOME TO OUR GBM PRE-DENTAL SOCIETY!

We will be discussing course requirements for pre-dental students today



# ATTENDANCE

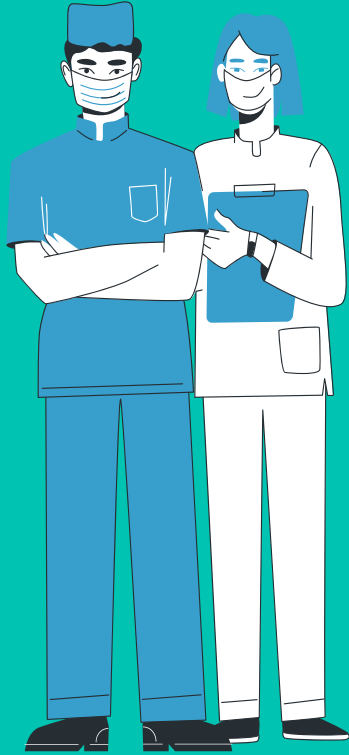




# ICEBREAKER: UNPOPULAR OPINIONS

Form your groups, introduce yourself, and  
share your unpopular opinions.!





# ADEA

- American Dental Education Association
- [https://www.adea.org/GoDental/Application\\_Prep/The Admissions Process/Timeline to apply.aspx](https://www.adea.org/GoDental/Application_Prep/The_Admissions_Process/Timeline_to_apply.aspx)





# FIRST YEAR



01

## MEET WITH YOUR ADVISOR

Get to know them, talk  
about your personal  
goals

02

## SUGGESTED COURSES:

Biol 141, 142  
Chem 101, 102 + 102L  
English GEP: ENGL 100  
Math GEP: MATH  
151/155

03

## GET INVOLVED!

Join clubs around campus,  
talk to upperclassmen

04

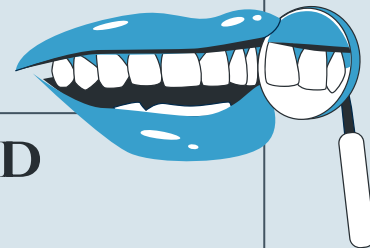
## SUMMER

Join a summer enrichment  
program, work or  
volunteer





# SECOND YEAR



01

## SELECT A MAJOR

It does not need to be stem based, there is no “right” major for dental school!



02

## SUGGESTED COURSES:

Biol 302, 303, 300L  
Chem 351 +351L, 352 +352L  
Psyc 100 (recommended, not required)

03

## WORK OR VOLUNTEER

This can be at dental office, but it does not have to be!

04

## PREP

Put together a financial plan for applying to dental school



# SHADOWING AND VOLUNTEER OPPORTUNITIES





# THIRD YEAR

**This depends if you want to apply during college or take a gap year, do what is best for you!**

## COMPLETE 90 CREDITS

In order to apply to dental school, you need to have completed at least 90 credits

## REVIEW THE PROCESS

Think about when you want to take the DAT and register, review your process with your pre-health advisor

## WHICH DENTAL SCHOOL?

Research which dental schools you would want to attend.

## COURSE REQUIREMENTS

- Phys 111, 112
- Upper level bio labs: Biol 302L, 303L
- (not required, highly recommended) Microbiology: Biol 375 + lab
- Statistics 350
- An additional English course (not required, recommended)

## SUMMER

ADEA AADSAS application opens on June 1st



**Dental School Statistics Spreadsheet**







☒ This Site  
☐ All of UMBC

## PreMedical & PreDental Advising Office

[Home](#)[Explore](#) ▼[Plan](#) ▼[Prepare](#) ▼[Apply](#) ▼[Events](#) ▼[Contact Us](#) ▼

### Location

Meyerhoff Chemistry  
Building, Room 140

### Contact


[Contact Us](#)

 [myUMBC](#)

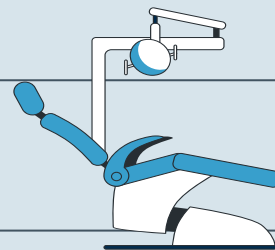
# Joining UMBC's Health Professions Evaluation Committee (HPEC) Annual Cohort

The deadlines for First-Time Applicants and Re-Applicants to express interest in joining the HPEC 2024 Cohort have passed, and the interest forms are now closed.

Independent applicants (those applying outside the HPEC Cohort process) who are asked by a medical or dental school to submit documentation from their Pre-Health Advising office regarding their lack of a Committee Letter can follow the link below the Interest Form table to more information about formally requesting this documentation from the PreMedical and PreDental Advising Office for the 2023-2024 application cycle.

The pre-health application process at UMBC, known as the [HPEC Cohort](#) , supports UMBC undergraduate students and alumni who are applying to Dental or Medical school for the first and/or second time. The start of

# FOURTH YEAR



## ELECTIVES

Biochemistry: Biol 430, Chem 437  
 Anatomy: Biol 251/252 (not required, recommended)  
 Upper Level elective courses: Immunology, Pathology, Neurobiology (not required, recommended)



## INTERVIEWS

Prepare for interviews  
 Use the career center!



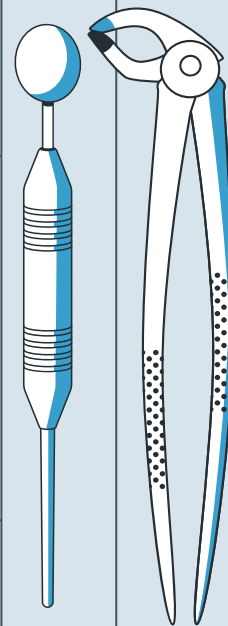
## FINANCIAL AID

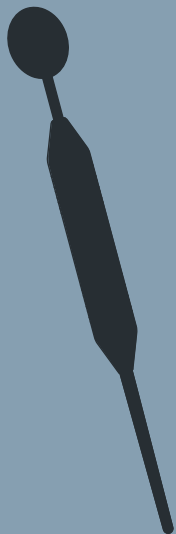
Initiate your financial aid application for the dental school you choose to attend



## SUMMER

Get ready for dental school!

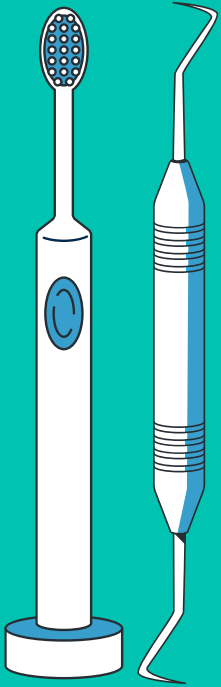




# UMBC PRE-DENTAL REQUIREMENTS

<https://premed.umbc.edu/wp-content/uploads/sites/369/2016/03/PreDental-Prerequisites.pdf>





# QUESTIONS?

**Thank you!**

